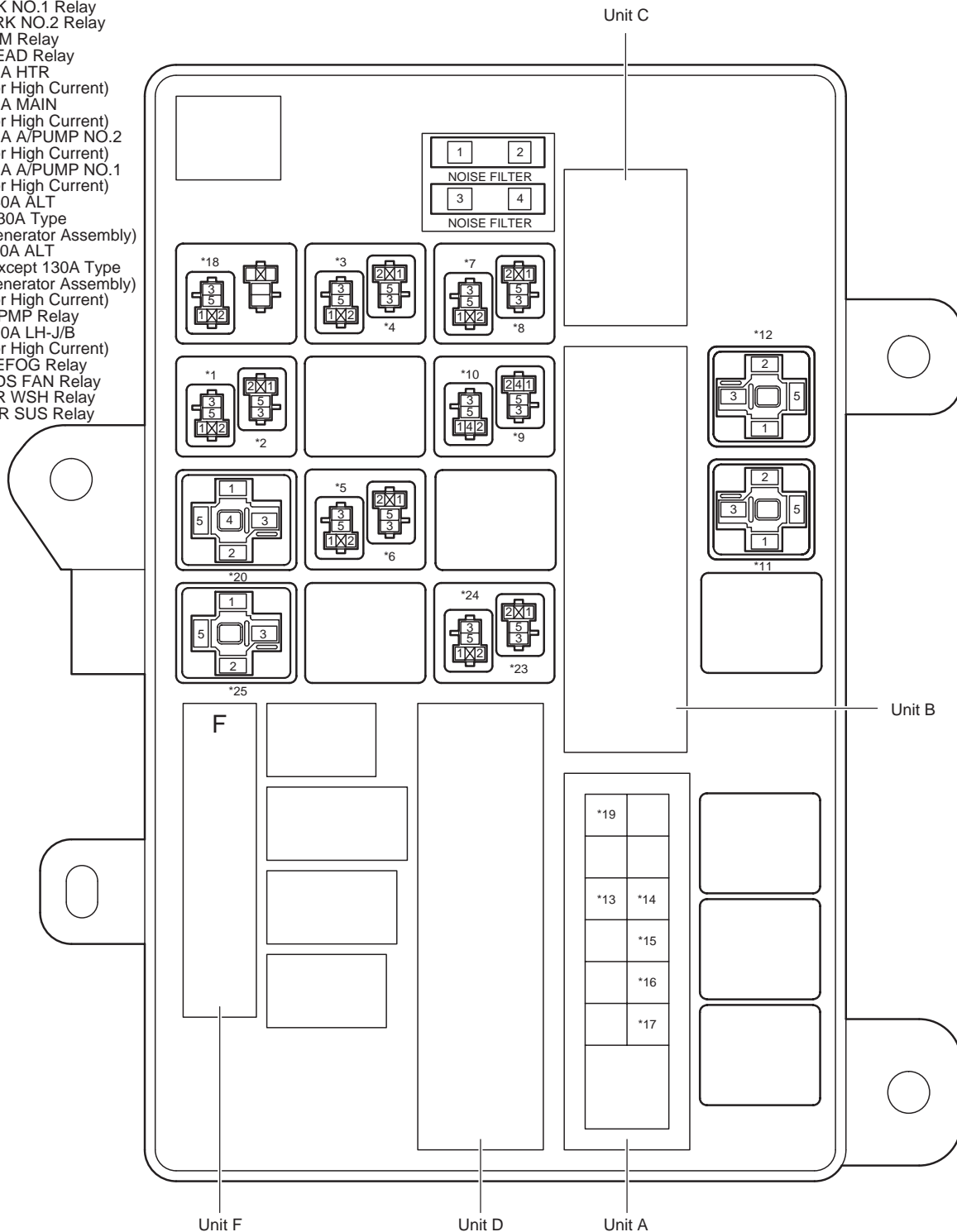


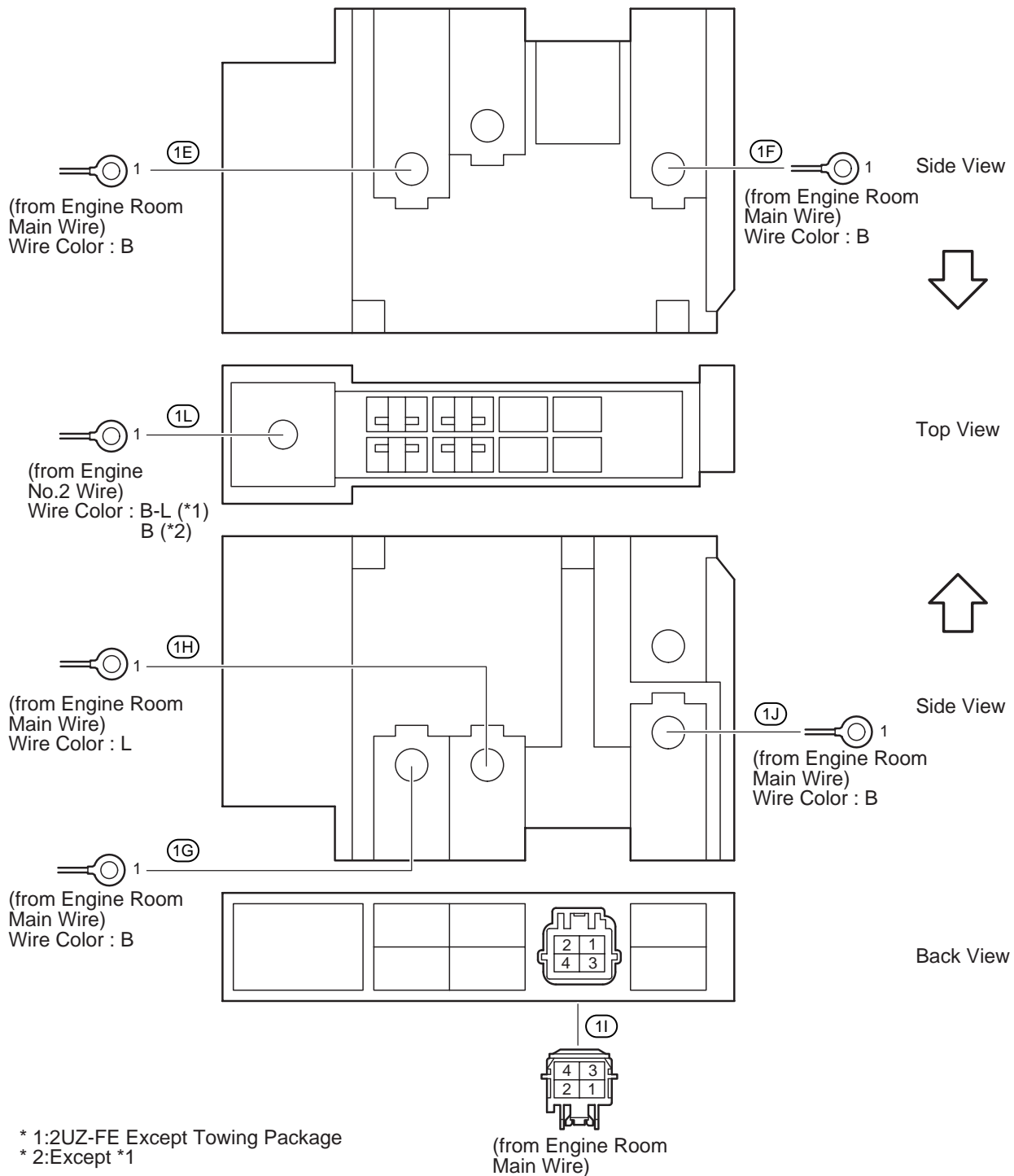
F RELAY LOCATIONS

| | |
|---------------------|---------------------------------------|
| ① : Engine Room R/B | Engine Compartment Left (See Page 20) |
| ② : Engine Room J/B | |

- * 1: SUB BATT Relay
- * 2: TOW TAIL Relay
- * 3: SECURITY HORN Relay
- * 4: FOG Relay
- * 5: ST Relay
- * 6: C/OPN Relay
- * 7: MG CLT Relay
- * 8: DEICER Relay
- * 9: BRK NO.1 Relay
- * 10: BRK NO.2 Relay
- * 11: DIM Relay
- * 12: HEAD Relay
- * 13: 50A HTR
(for High Current)
- * 14: 40A MAIN
(for High Current)
- * 15: 50A A/PUMP NO.2
(for High Current)
- * 16: 50A A/PUMP NO.1
(for High Current)
- * 17: 140A ALT
(130A Type
Generator Assembly)
180A ALT
(Except 130A Type
Generator Assembly)
(for High Current)
- * 18: F/PMP Relay
- * 19: 150A LH-J/B
(for High Current)
- * 20: DEFOG Relay
- * 23: CDS FAN Relay
- * 24: RR WSH Relay
- * 25: AIR SUS Relay



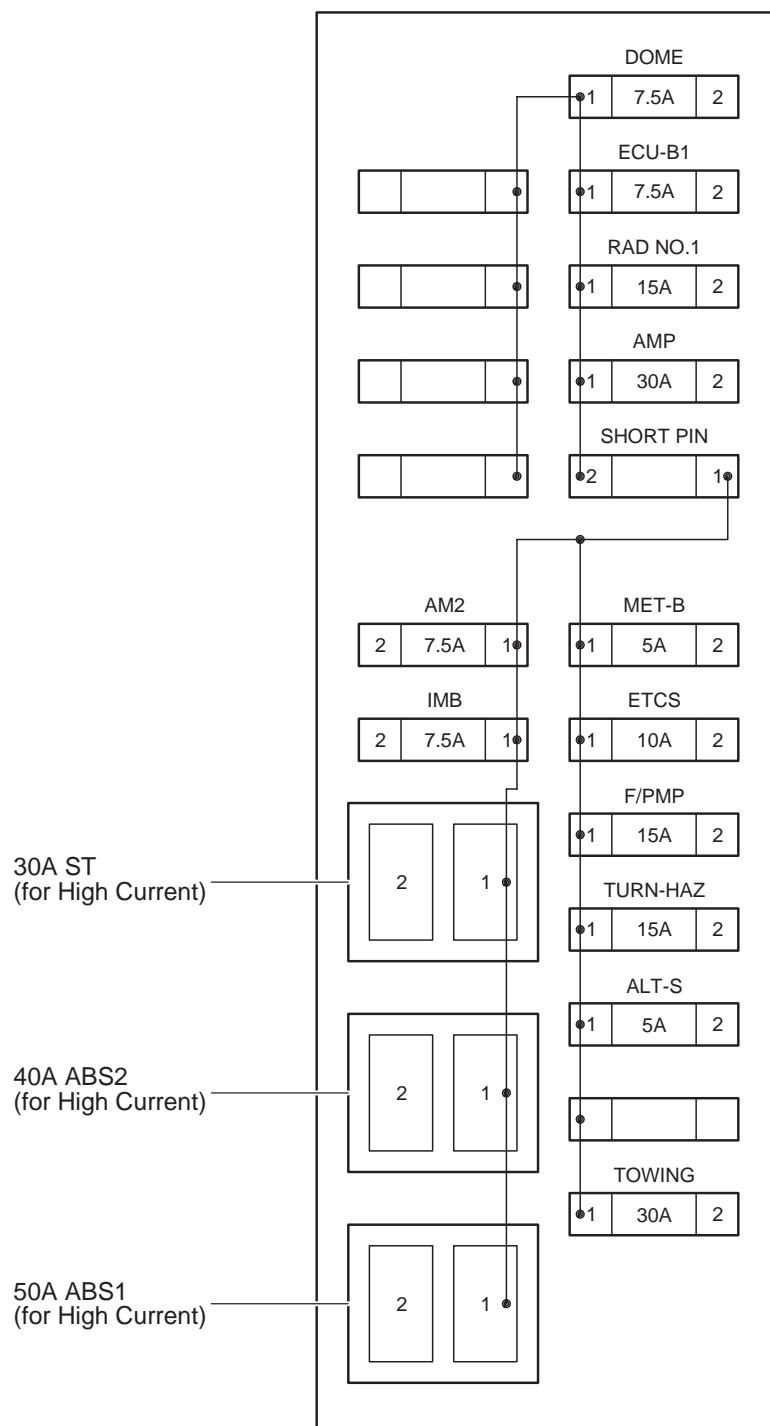
Unit A



F RELAY LOCATIONS

| | |
|---------------------|---------------------------------------|
| ① : Engine Room R/B | Engine Compartment Left (See Page 20) |
| ○ : Engine Room J/B | |

Unit B



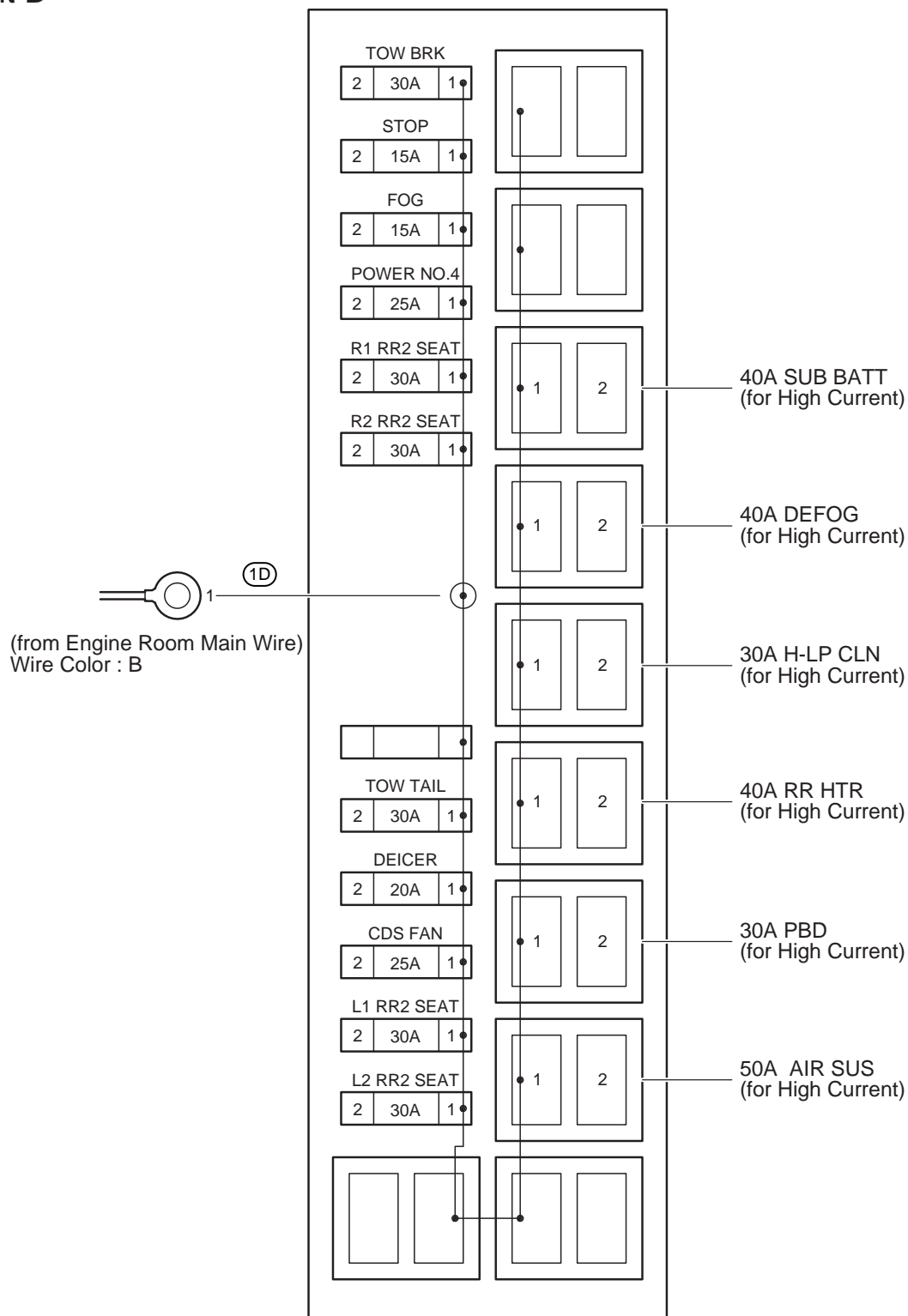
Unit C

| | | | | | |
|---------|------|---|--------------|------|---|
| | | | | | |
| IGN | | | AIR SUS NO.2 | | |
| 2 | 10A | 1 | 2 | 7.5A | 1 |
| MET | | | DEF I/UP | | |
| 2 | 7.5A | 1 | 1 | 5A | 2 |
| INJ | | | EFI NO.2 | | |
| 2 | 10A | 1 | 2 | 10A | 1 |
| HEAD LL | | | HEAD RL | | |
| 2 | 15A | 1 | 2 | 15A | 1 |
| HEAD LH | | | HEAD RH | | |
| 2 | 15A | 1 | 2 | 15A | 1 |

F RELAY LOCATIONS

| | |
|---------------------|---------------------------------------|
| ① : Engine Room R/B | Engine Compartment Left (See Page 20) |
| ② : Engine Room J/B | |

Unit D



SEQUOIA (EM08L0U)

Unit F

